

# Breton Drive



- Stunning three bedroom detached property
- Larger style, and spacious throughout
- Impressive open-plan kitchen/diner/family space
- Master with ensuite
- Stylish and well presented throughout

£245,000

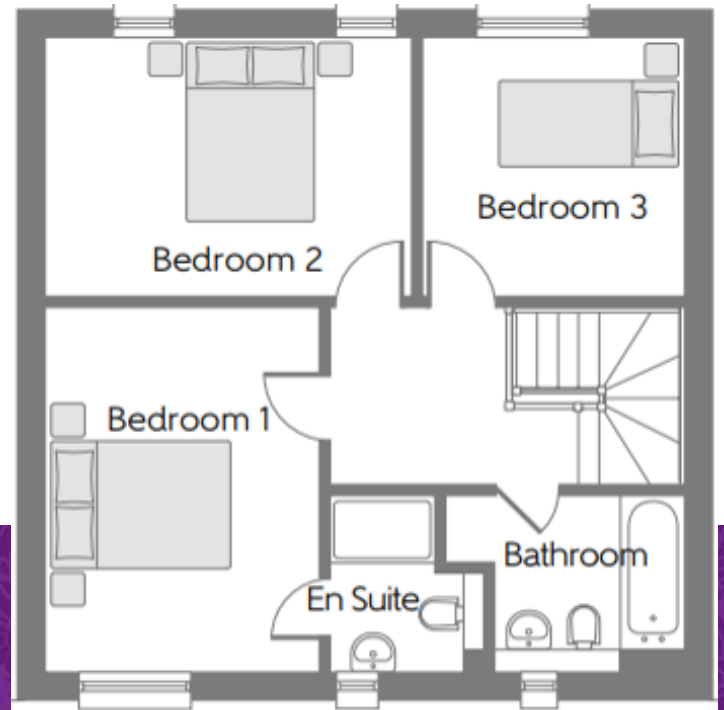
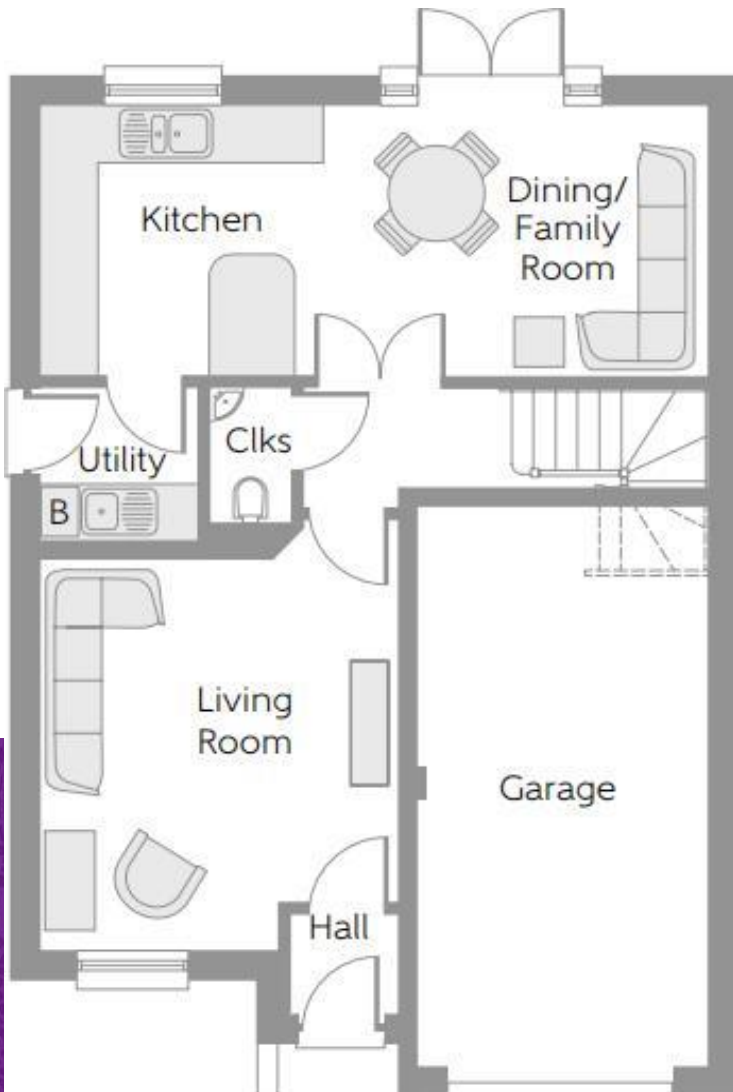


Multi-Award Wining



Built by 'Bellway' to the especially spacious, and very popular 'Peony' design, early viewing is essential when it comes to this superb, three bedroom detached property. Stylish and impressive throughout, the internal accommodation is presented to a fabulous standard, with a ground floor that delivers an entrance hall, lounge, inner hall, cloakroom/WC, and stunning open-plan kitchen/diner/family space with utility off.

The first floor brings three generous bedrooms, 'Master' with ensuite, and separate family bathroom. A double width drive to the front allows ample parking and approaches the garage alongside the front garden, complimented by the enclosed rear garden, which offers good privacy, a southerly aspect, and is laid to a large patio and lawn, with rear stocked border.



# “The Ingleby Barwick Experts”





Tenure: Freehold

Council Tax Band: D

EPC Rating: B



AGENTS NOTE: Every care has been taken with the preparation of these details, but they are for general guidance only. Measurements and dimensions are approximate, and any fixtures or fittings shown in photography does not infer that they are to be included within the sale. The agent has not tested any appliances or supplies and professional verification of these should be sought prior to purchase if required. These particulars do not constitute a contract or part of a contract.